



## SOVEREIGN CHEMICAL COMPANY

1225 West Market St., Akron OH 44313

Phone: 330-869-0500, Fax: 330-869-0518

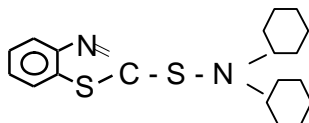
www.sovchem.net

# Sovchem® DCBS Granule

**Manufacturer:** Sovereign Chemical Company

**Classification:** Sulfenamide Accelerator

**Chemical Composition:**



Empirical Formula:  $C_{19}H_{26}N_2S_2$

Molecular Weight: 347

CA Nomenclature: N, N-Dicyclohexyl-2-benzothiazolesulfenamide

### Physical Data

Specification Properties	Value	Test Method
Melting Point (initial)	98°C minimum	ASTM D1519
Ash Content, % by mass	0.30% maximum	ASTM D4574
Free Amine	0.50% maximum	ASTM D4936
Purity	96.0% minimum	SCCTM #003
Cyclohexen Insolubles	0.50% maximum	SCCTM #002
Heat loss, % by mass	0.40% maximum	ASTM D4571

### Typical Properties

Physical Appearance	Light yellow to pink granule	Visual
---------------------	------------------------------	--------

### Applications

**Uses:** Delayed-action slow curing sulfenamide accelerator. **DCBS** has best scorch resistance of all sulfonamide accelerators. **DCBS** provides lower modulus than CBS, TBBS, MBS, MOR, thus will require higher use levels for equivalent physicals. DCBS is more often used in steel skim compounds for improved adhesion. Stocks containing **DCBS** can be stored for long time without deterioration in scorch safety or vulcanisate properties. **DCBS** is highly suitable and widely used in retread, large tires, shock absorbers and conveyor belts.

**Polymers:** Natural rubber, synthetic Polyisoprene, Polybutadiene, SBR and NBR.

**Synergism:** **DCBS** cure performance can be boosted with thiuram or guanidine accelerators.

**Cure Effect:** Promotes a slow cure rate with good scorch safety. Increasing accelerator/sulfur ratio enhances the cure efficiency.

### Packaging and Storage

**Packaging:** 25 Kg (55.1 lb.) kraft paper bag with a liner.

**Shelf Life:** 1 year if stored as indicated below.

**Storage:** Store in unopened original packaging in a cool dry place.

Specification Date: August 17, 2007 (Supersedes: New)