

**SOVEREIGN CHEMICAL COMPANY**

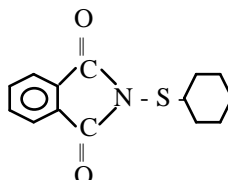
1225 West Market St., Akron OH 44313

Phone: 330-869-0500, Fax: 330-869-0518

www.sovchem.net

Sovchem® CTP Granule**Manufacturer:** Sovereign Chemical Company**Classification:** Scorch inhibitor**Chemical Composition:**

Chemical Structure:

Empirical Formula: C₁₄H₁₅NO₂S

Molecular Weight: 261

CA Nomenclature: N-cyclohexylthiophthalimide

Physical Data

Specification Properties	Value	Test Method
Active substance (CTP) content	96.0% minimum	GC
Heat Loss	0.5% maximum	ASTM D 4571
Toluene Insolubles	0.5% maximum	ASTM D 1766
Ash	0.1% maximum	ASTM D 4574
Melting Point Final	89.0 - 94.0° C	ASTM D 1519
Typical Properties		
Physical Form	Pale-cream granules	Typical
Specific Gravity	1.33 Typical	Typical

Applications

Uses: Sovchem® CTP Granule is a pre-vulcanization inhibitor that increases scorch time without effecting final vulcanizate properties. It inhibits scorch by acting as a MBT scavenger in sulfenamide and thiazole based cure systems. It is not as effective with dithiocarbamate and thiourea type accelerators. It is basically non-staining but may cause slight discoloration in white compounds.

Processing: Even a small addition of Sovchem® CTP Granule (0.1 to 0.4 phr) to rubber compounds increases their processing safety significantly which allows for increases in processing speeds (extrusion, calendering, etc.).

Packaging and Storage

Packaging: 20kg (44.1 lb) paper bags.

Shelf Life: 1 year if stored as indicated below.

Storage: Stored in unopened original packaging in a cool dry place away from foodstuffs and acids.

Specification Date: December 7, 2005 (Supersedes December 16, 2003)